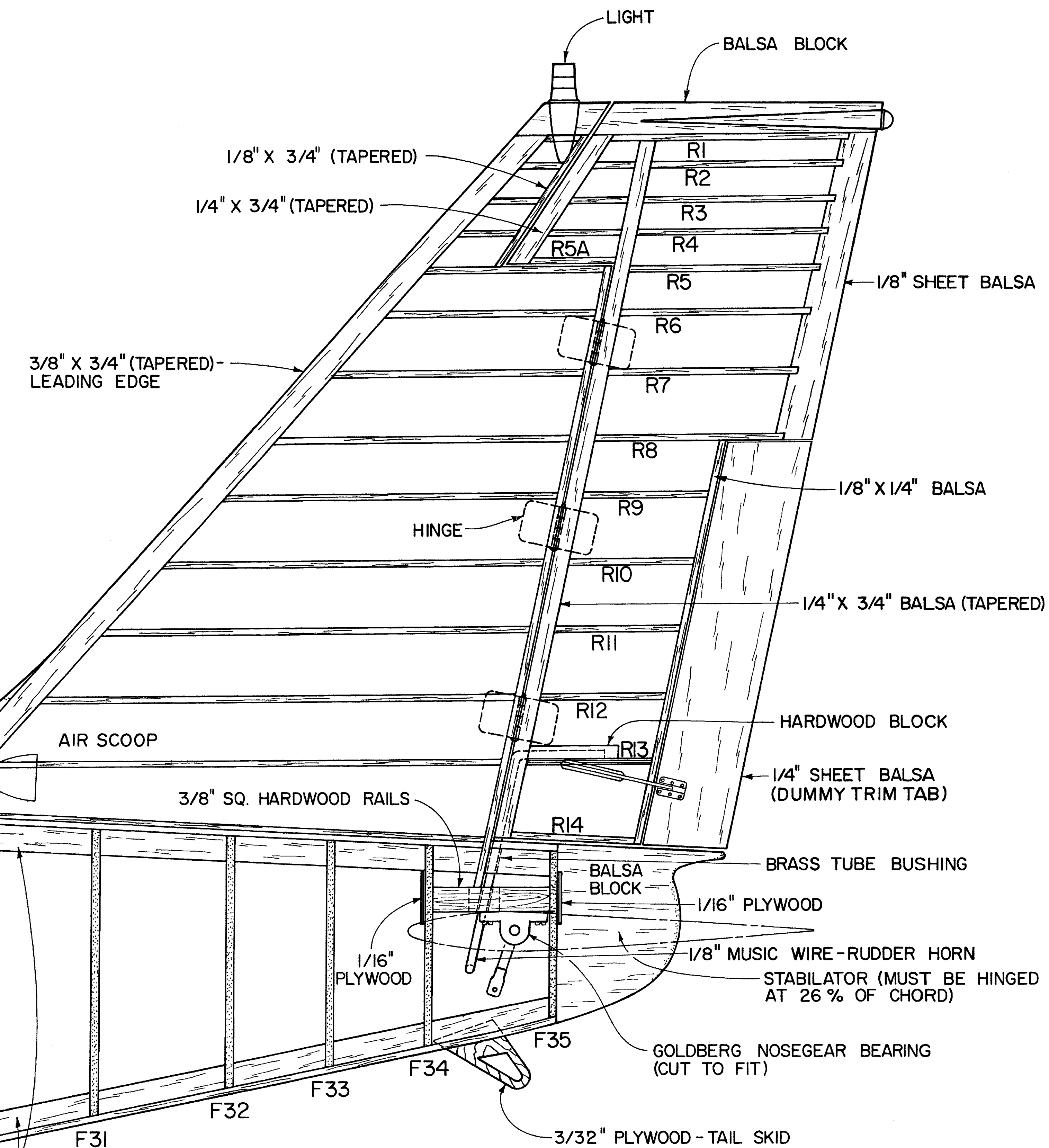
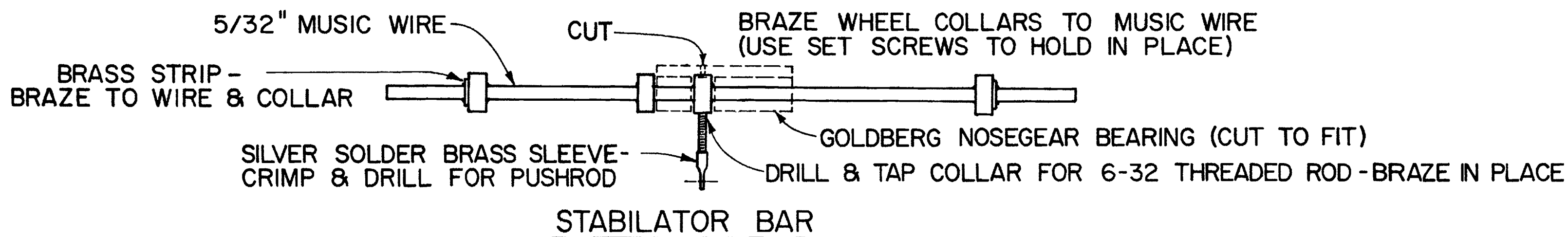
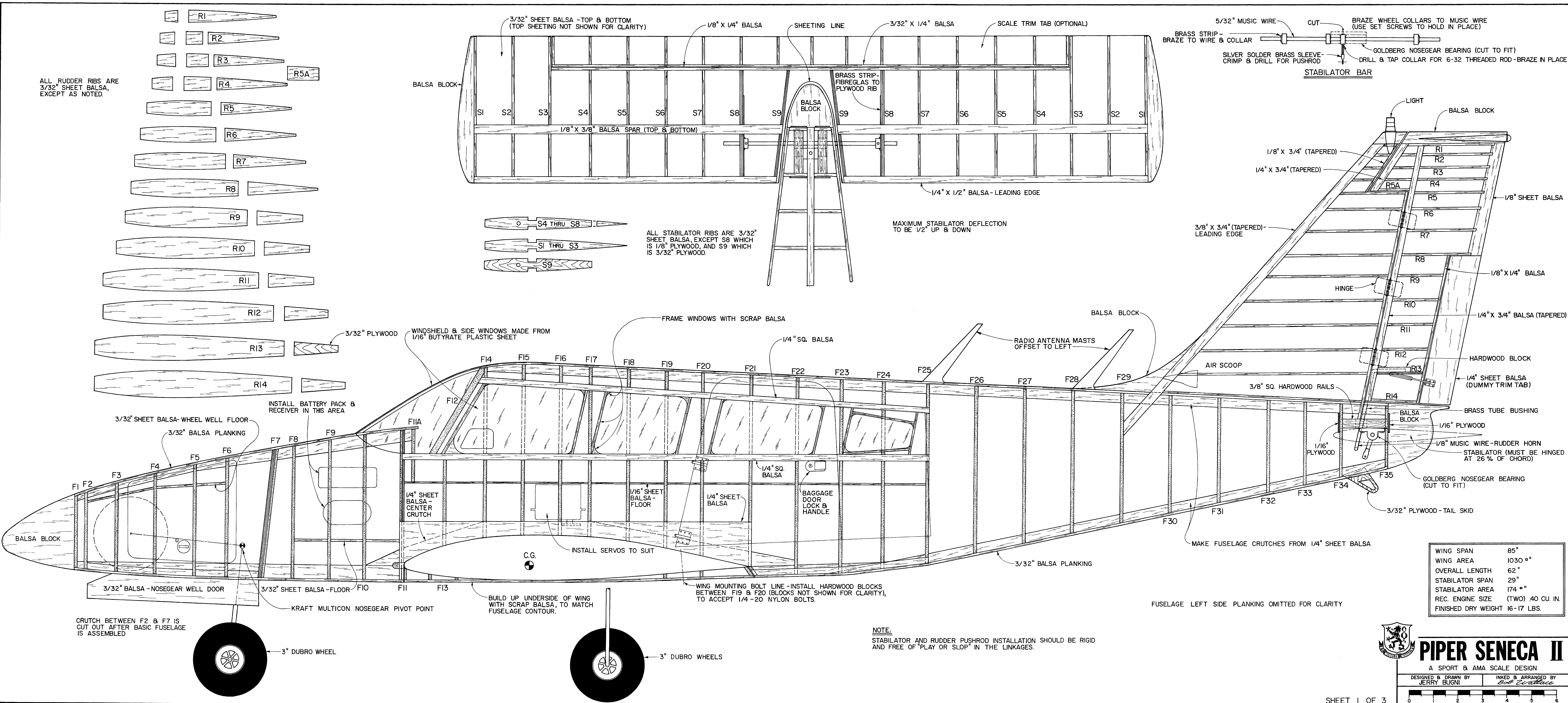
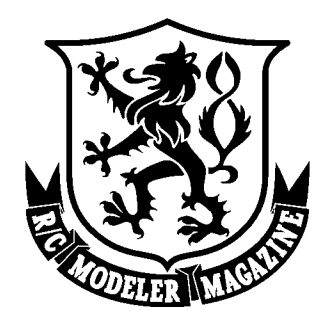


ALL RUDDER RIBS ARE 3/32" SHEET BALSA, EXCEPT AS NOTED.



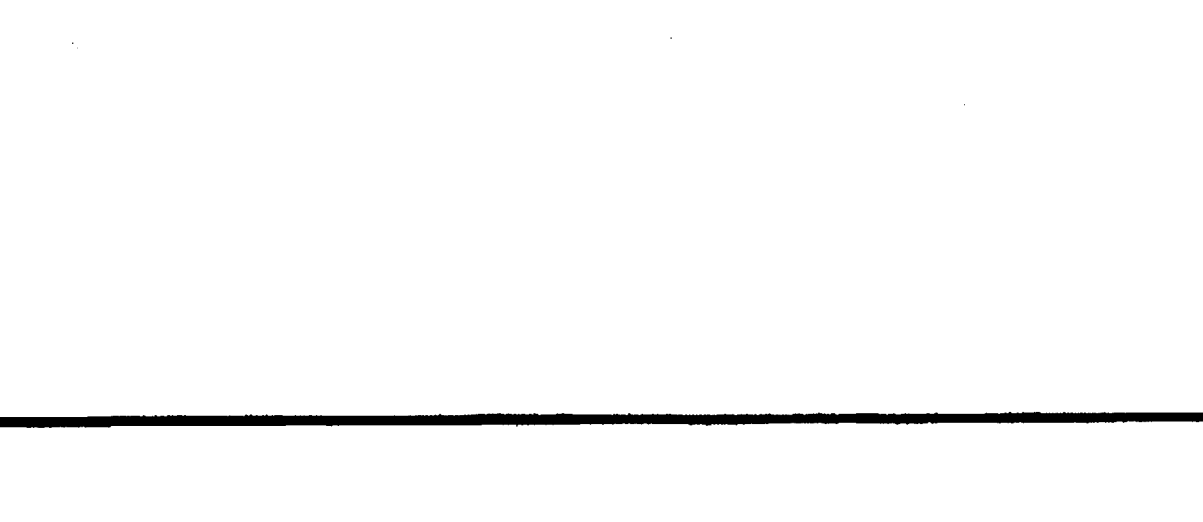
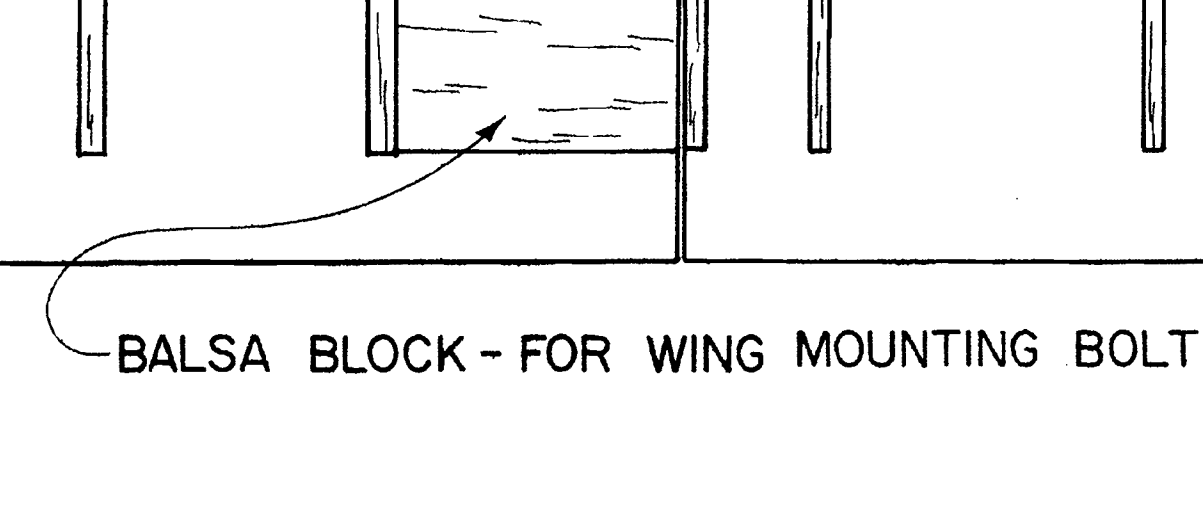
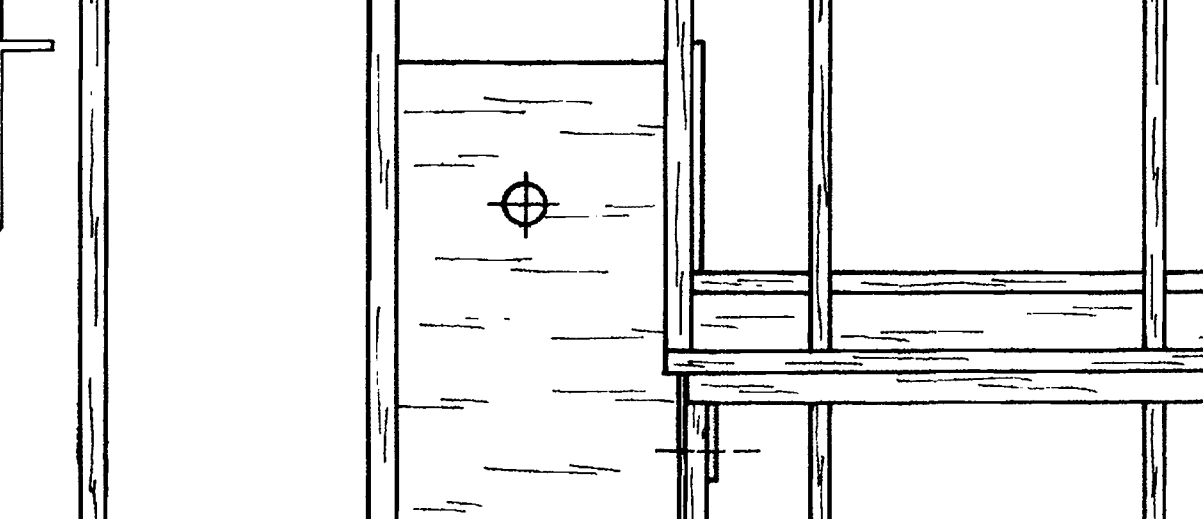
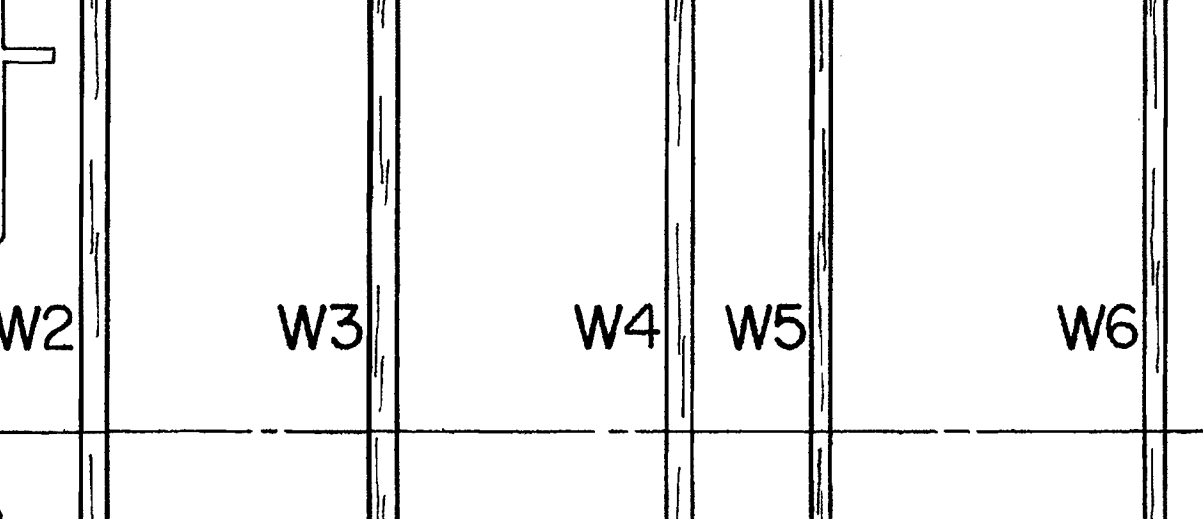
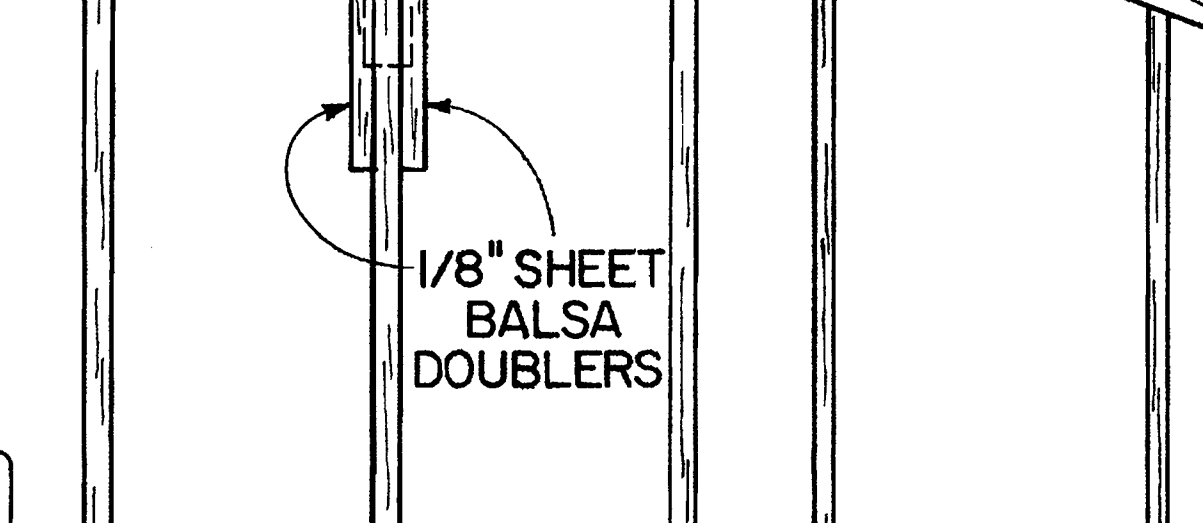
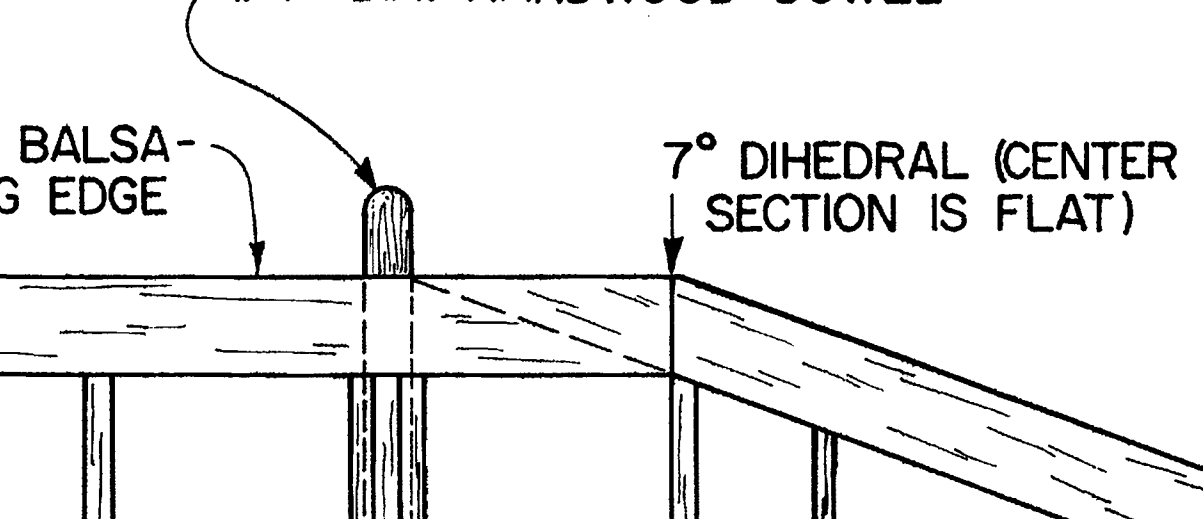
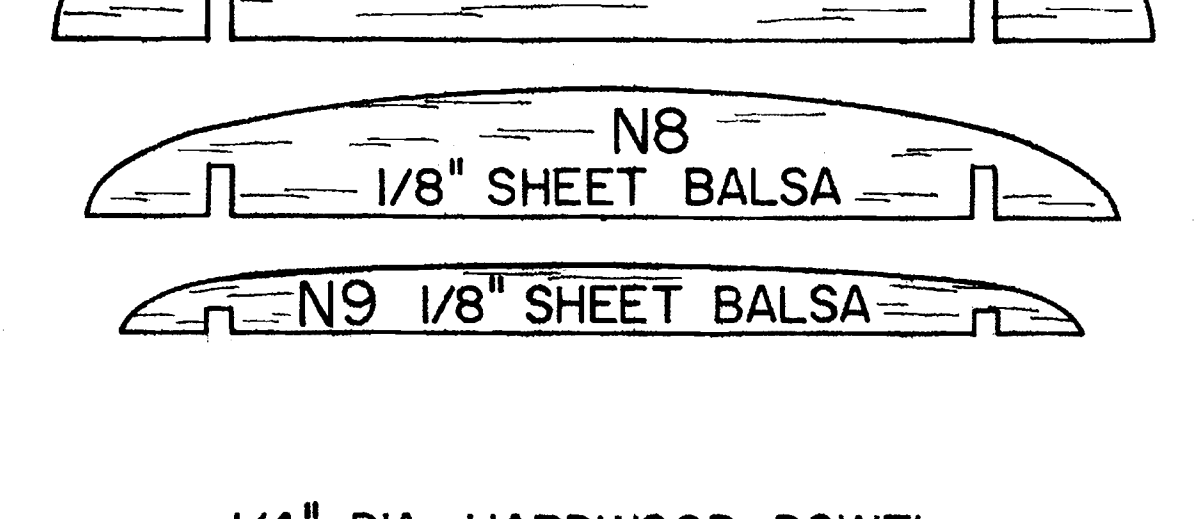
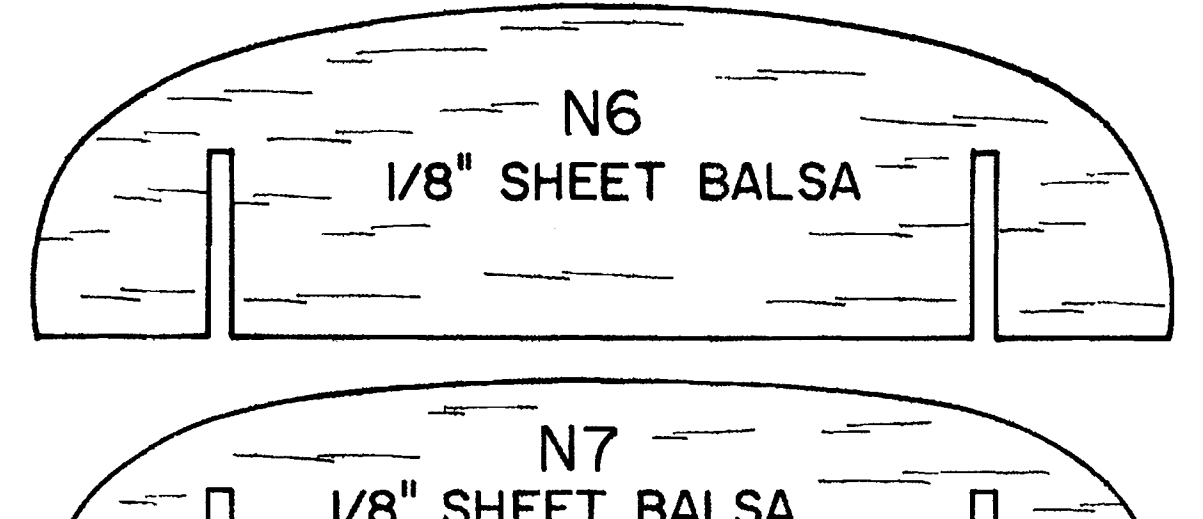
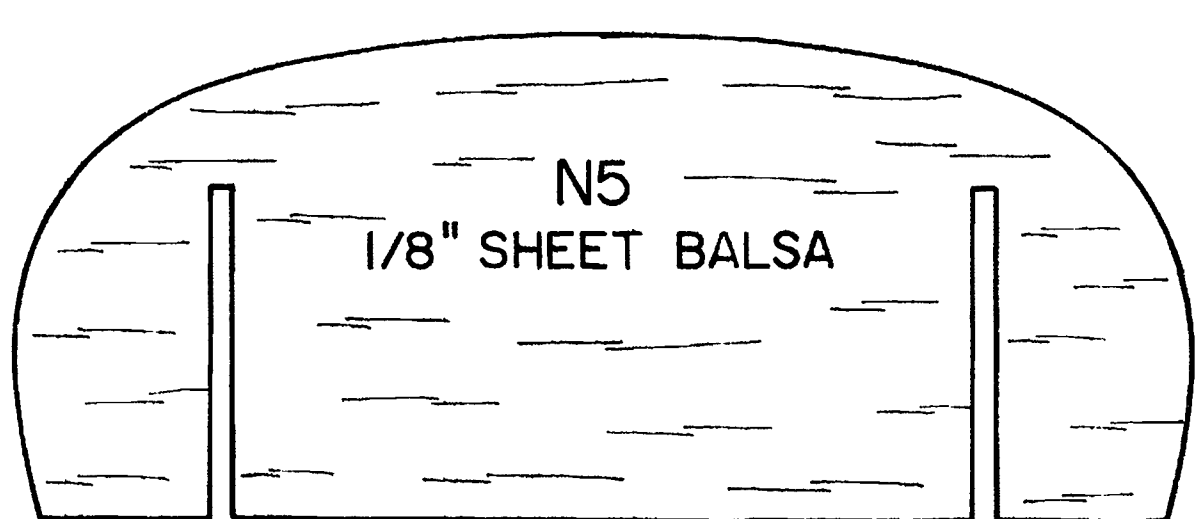
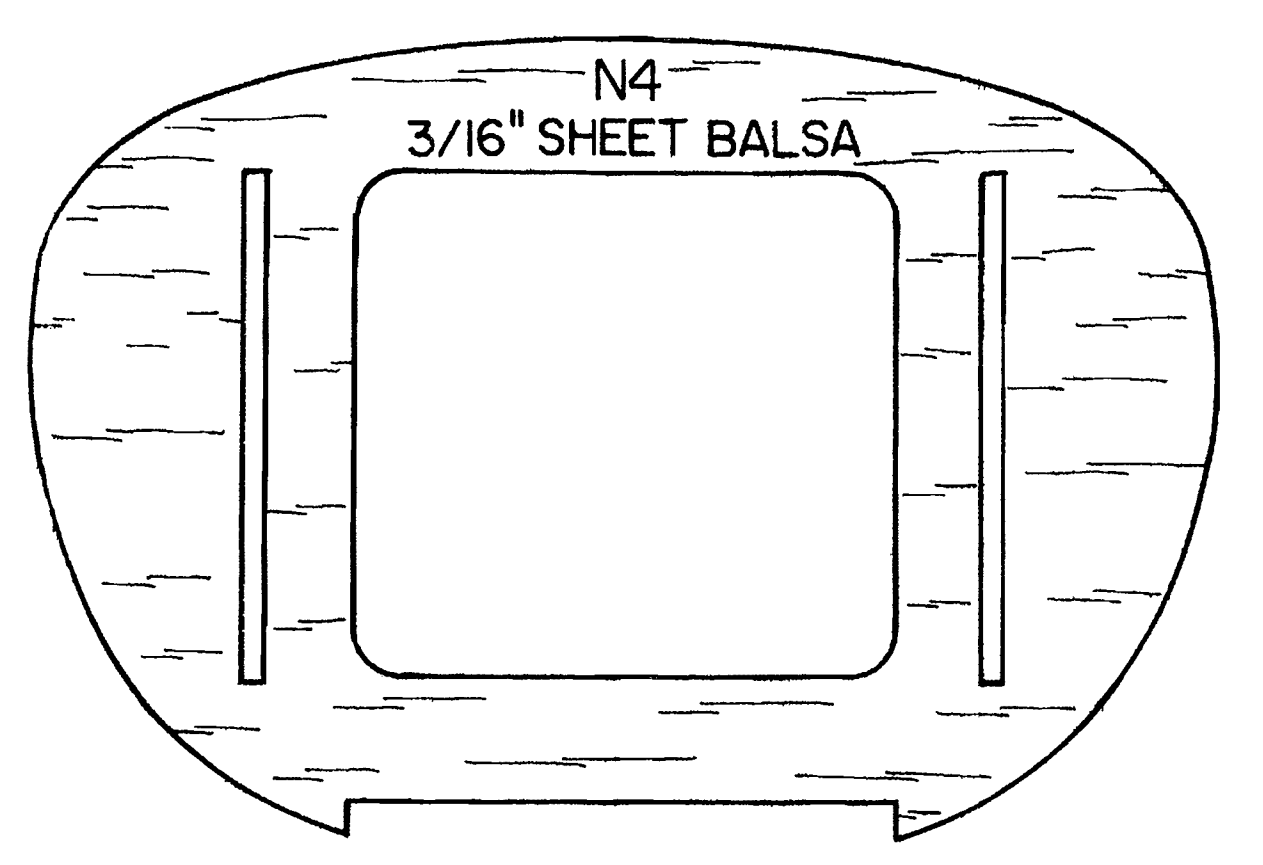
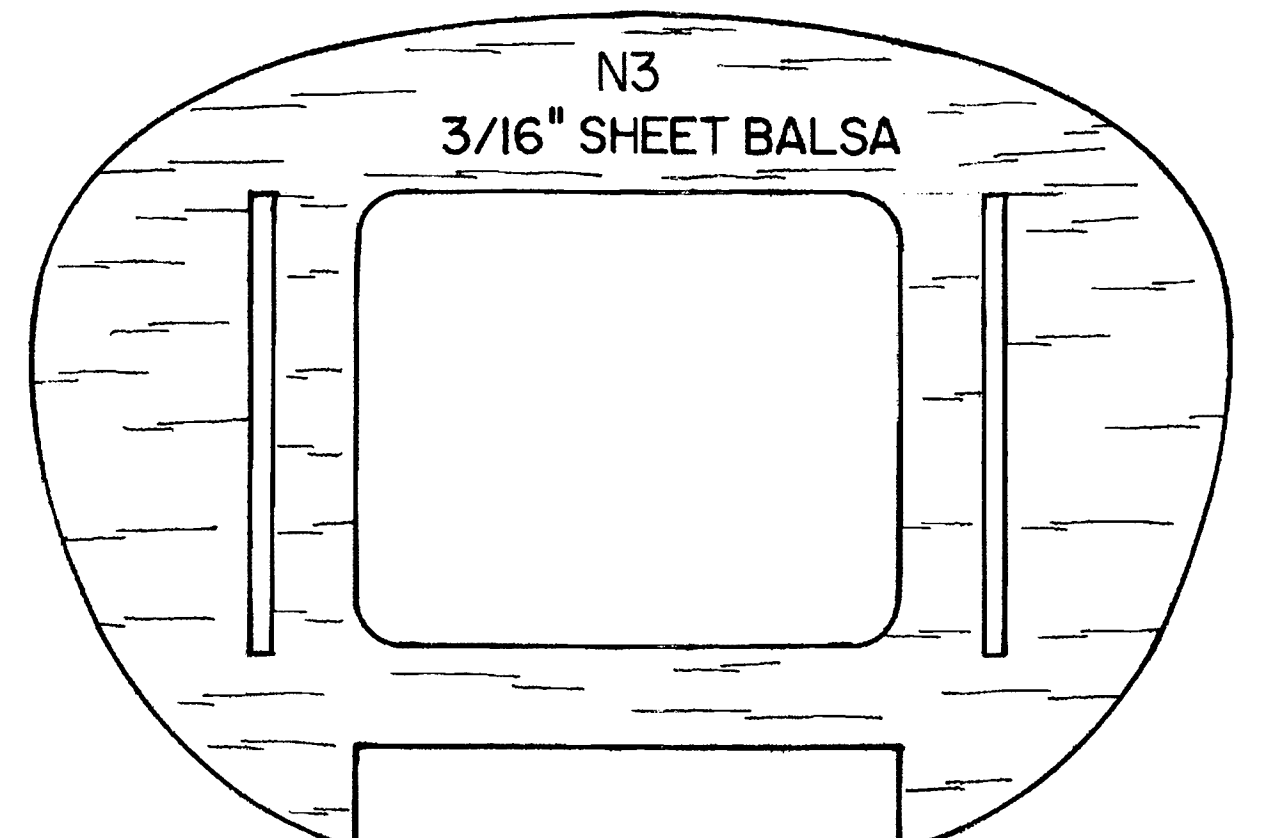
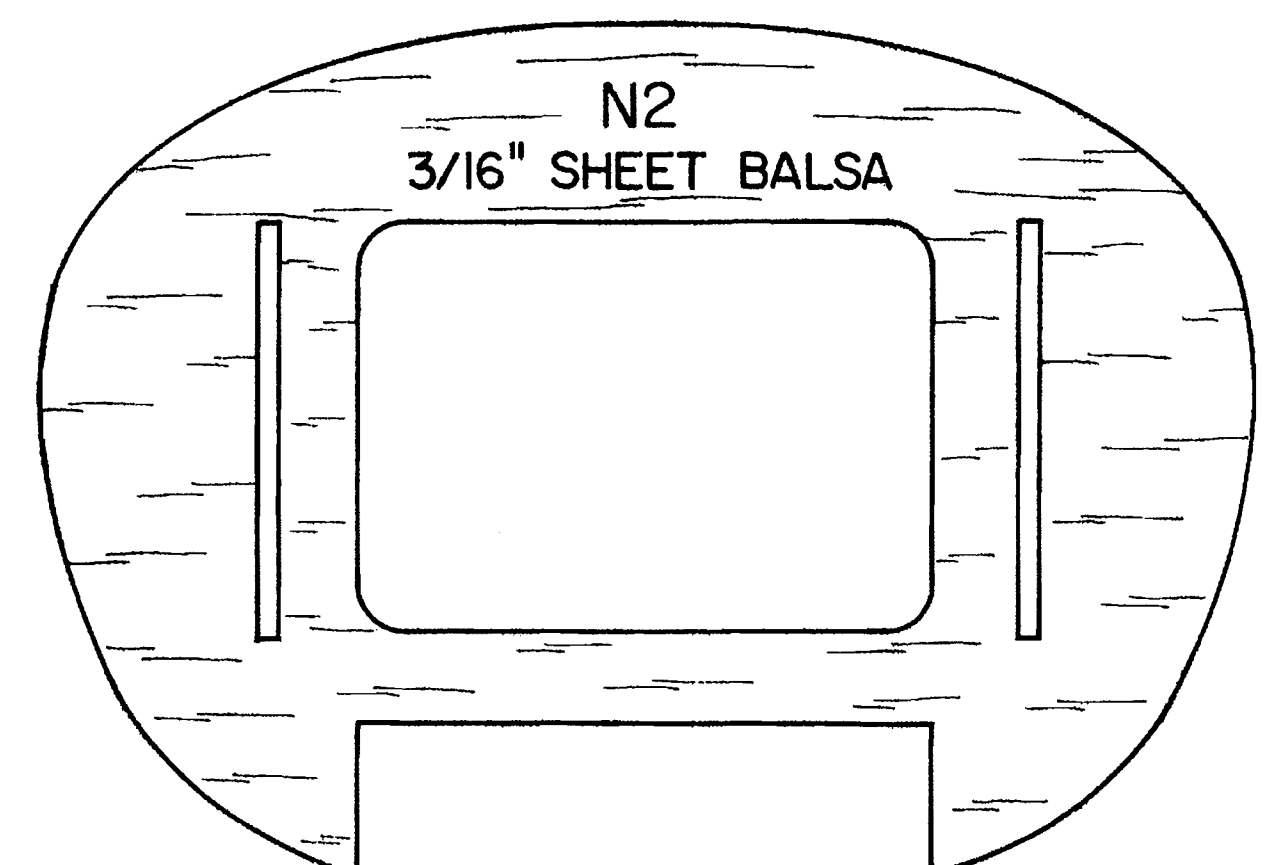
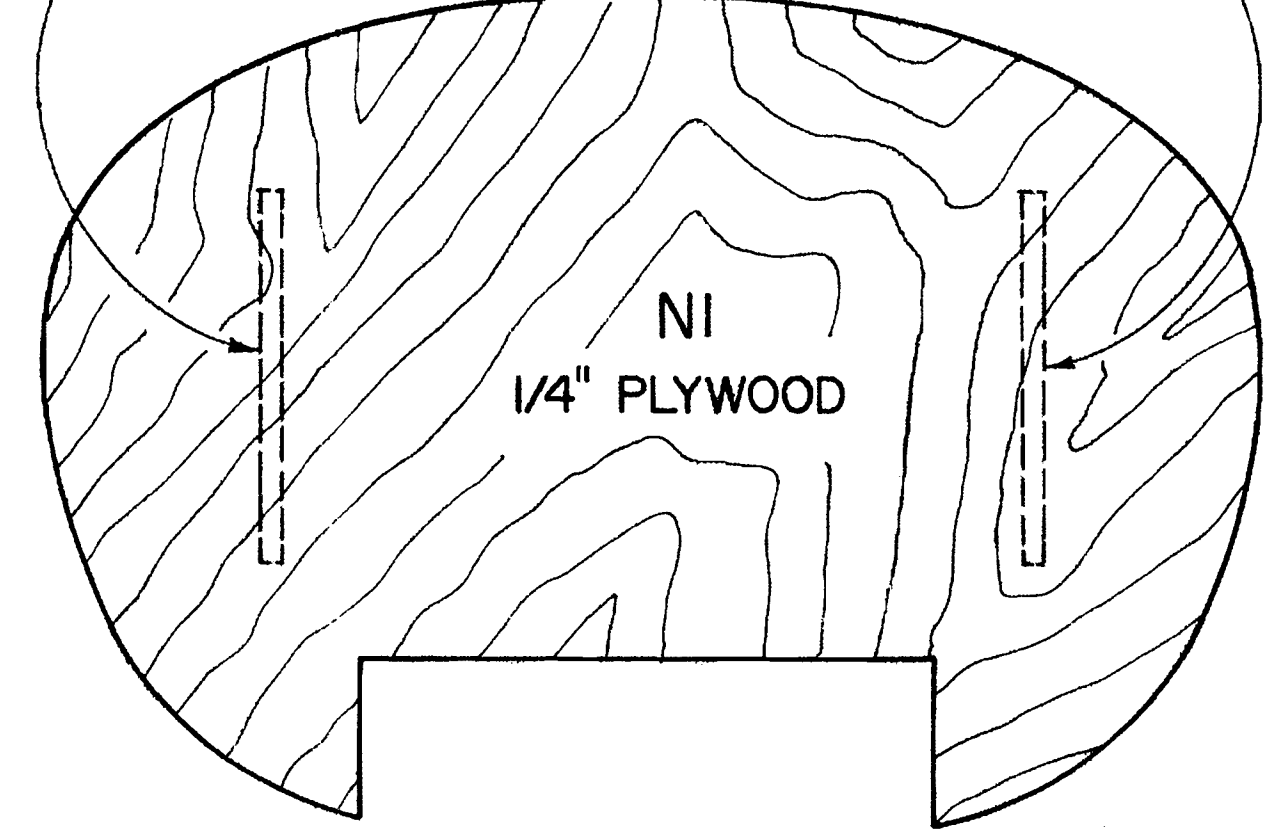
 **PIPER SENECA II**
A SPORT & AMA SCALE DESIGN
DESIGNED & DRAWN BY JERRY BUGNI
INKED & ARRANGED BY Bob Crutcher

SHEET 1 OF 3

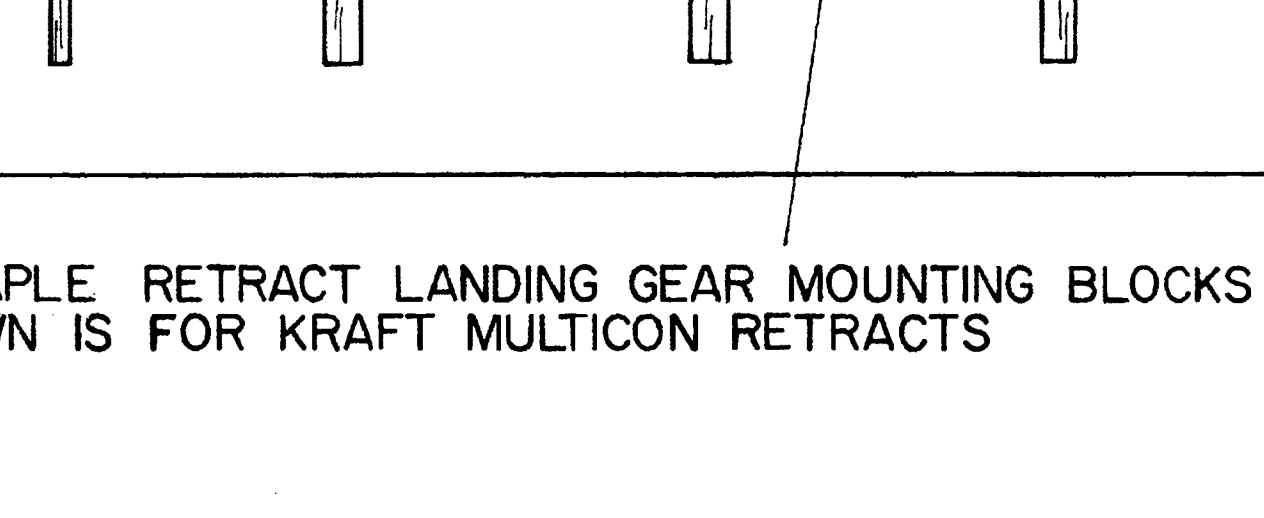
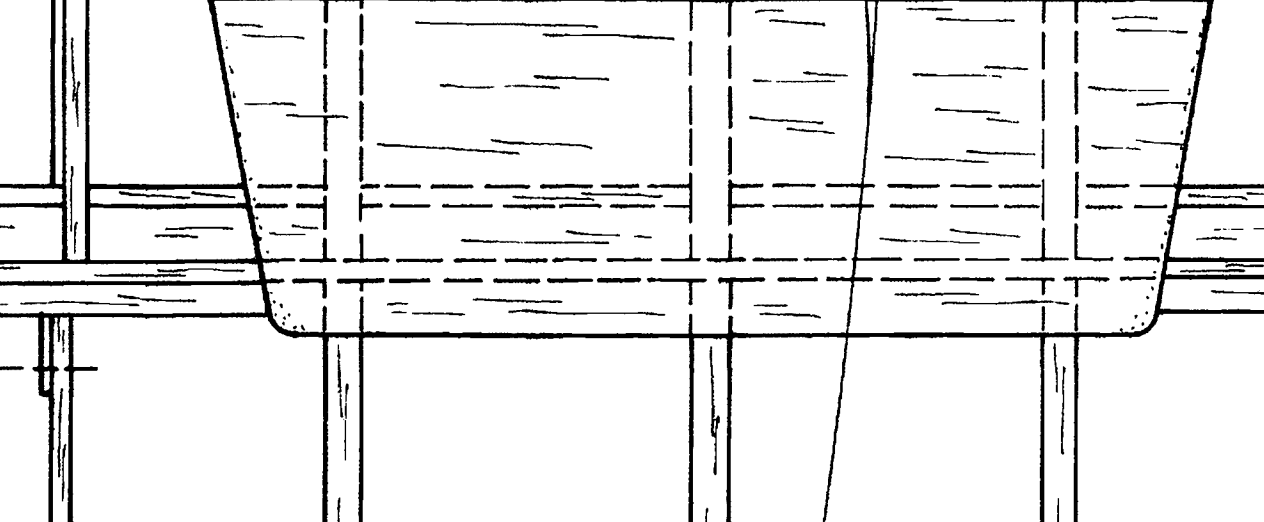
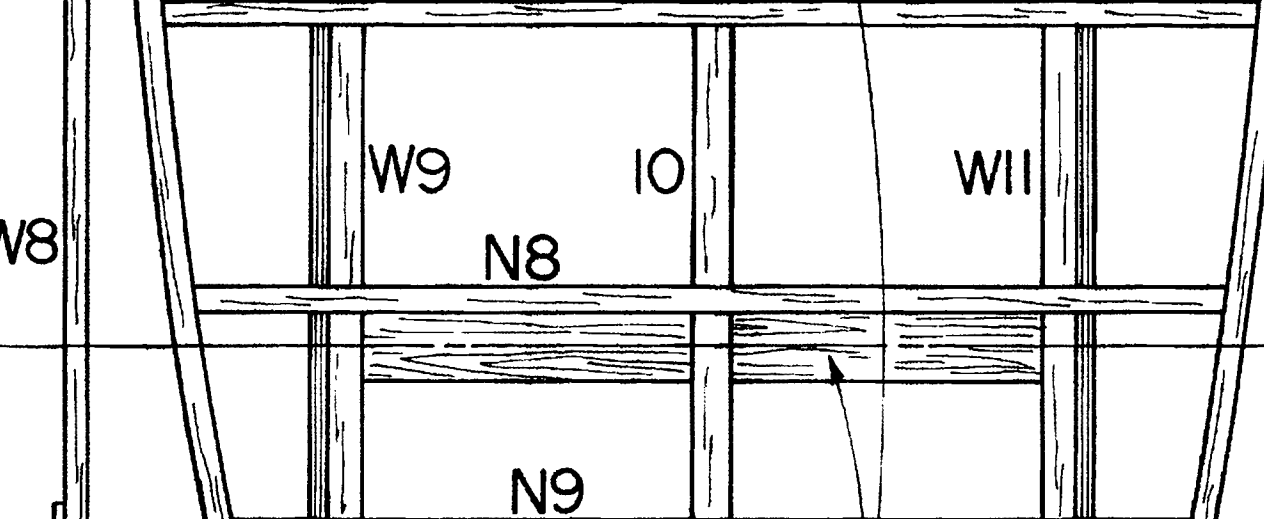
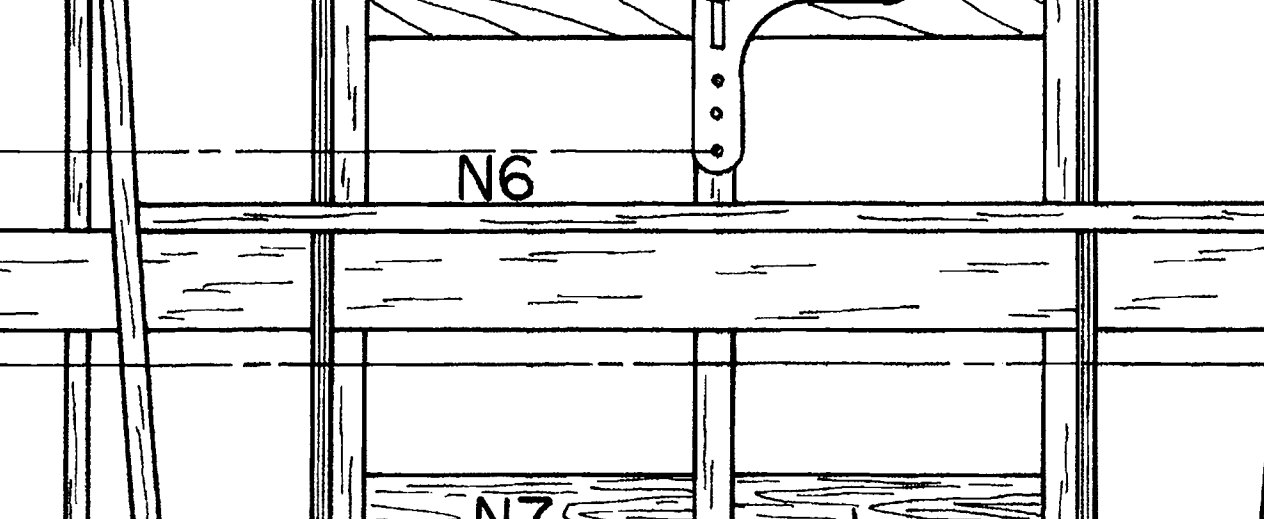
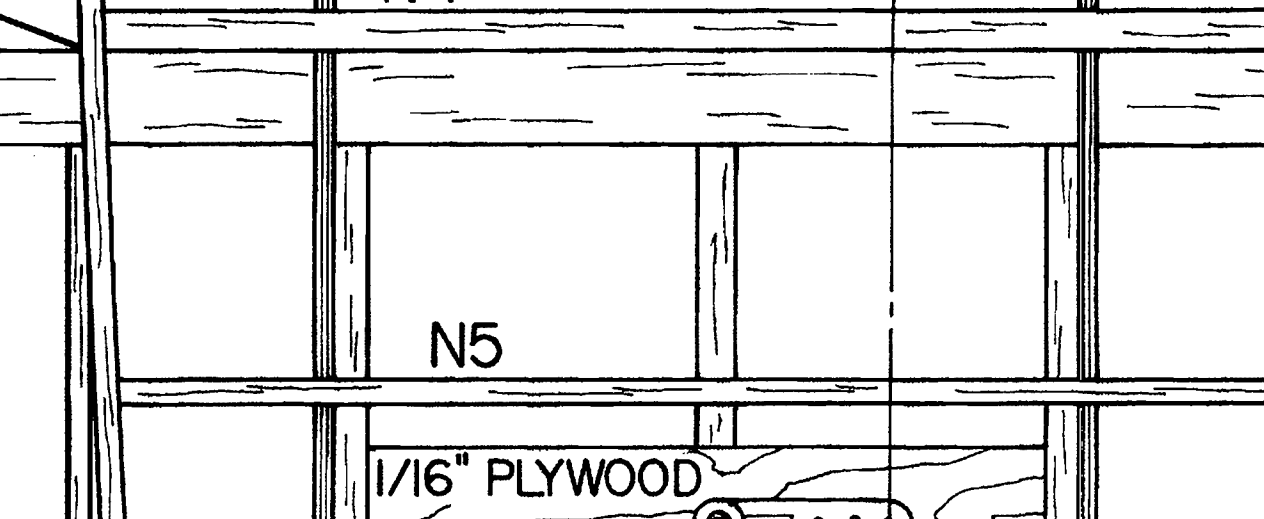
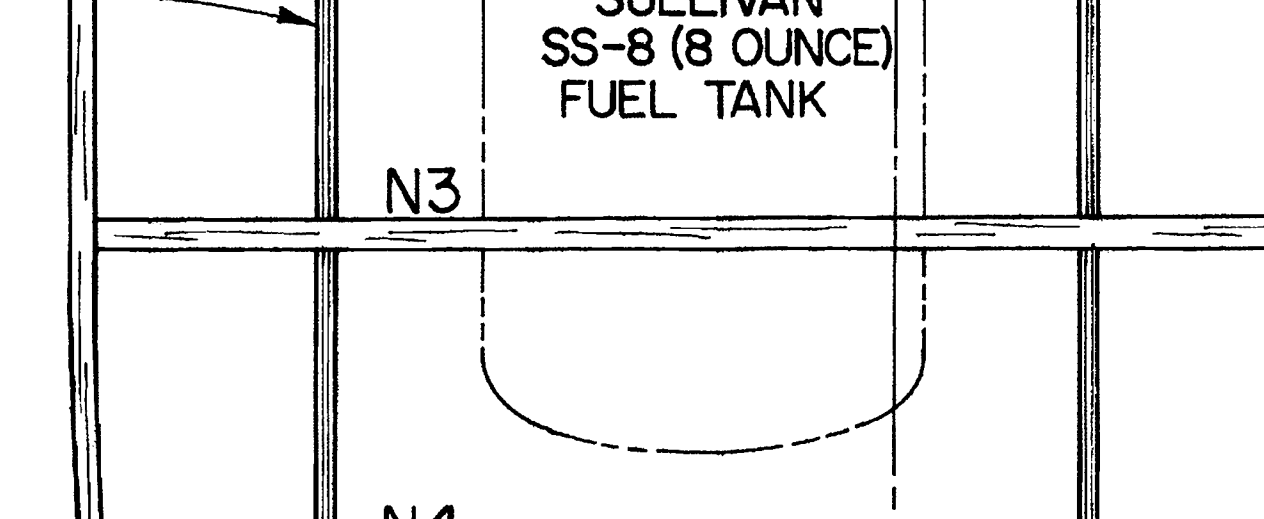
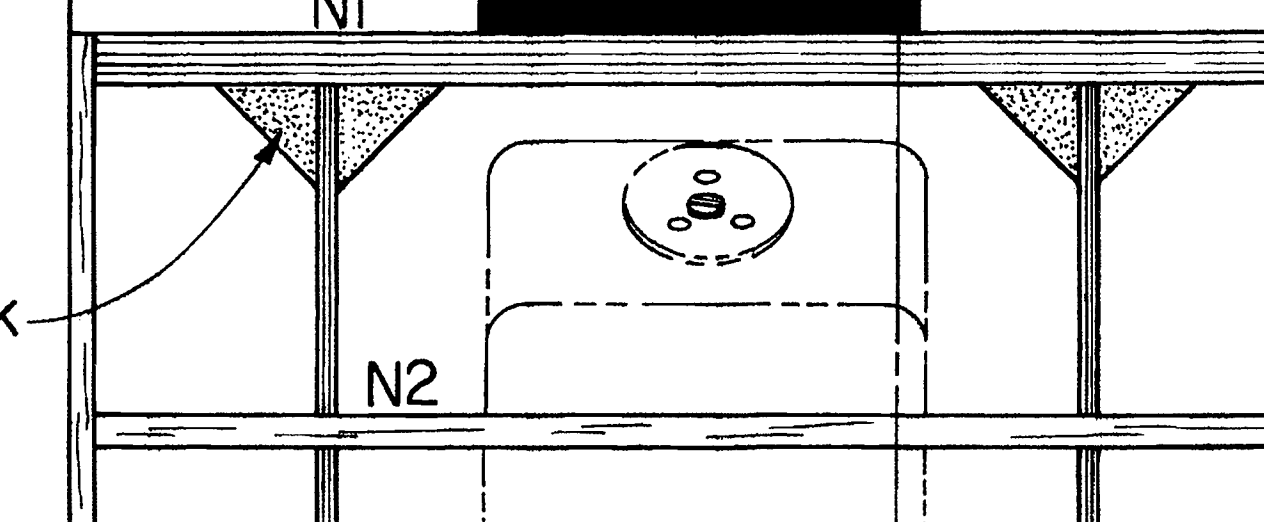
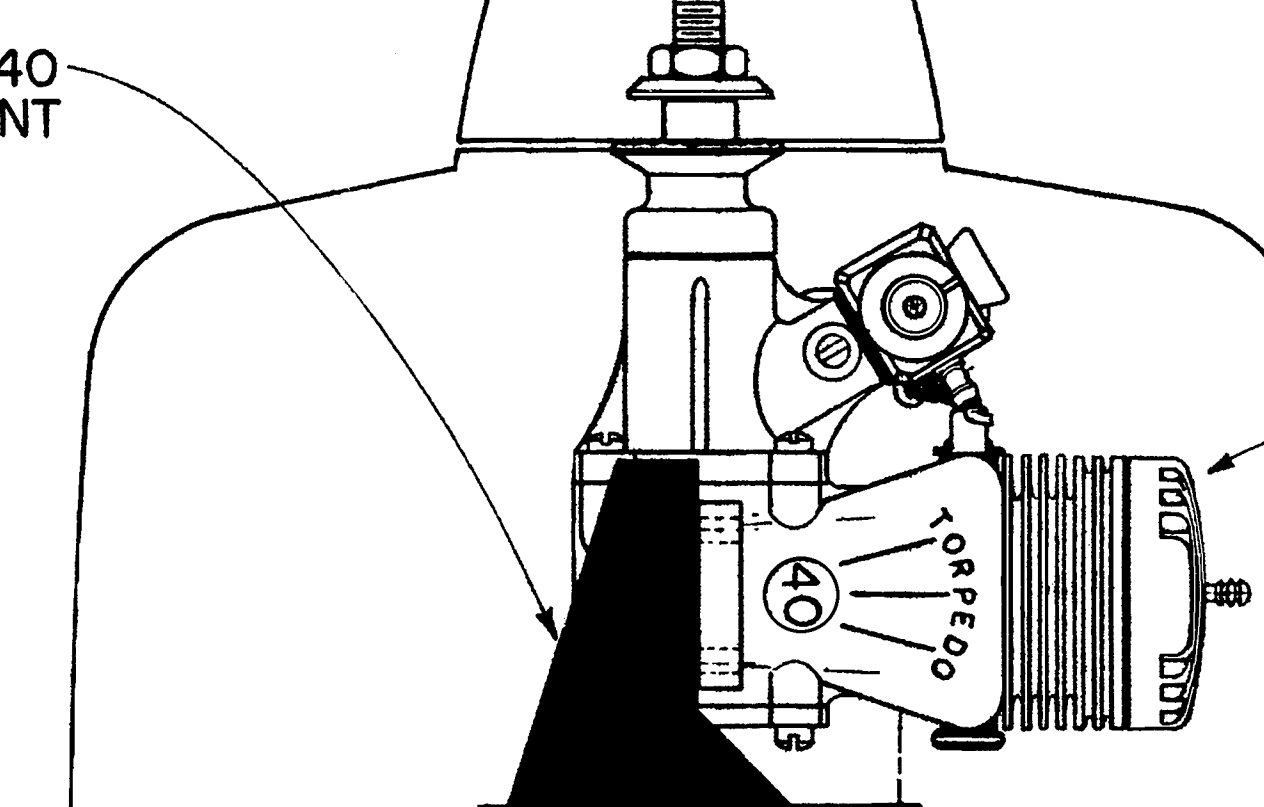
0 1 2 3 4 5 6

PLAN NO. 803

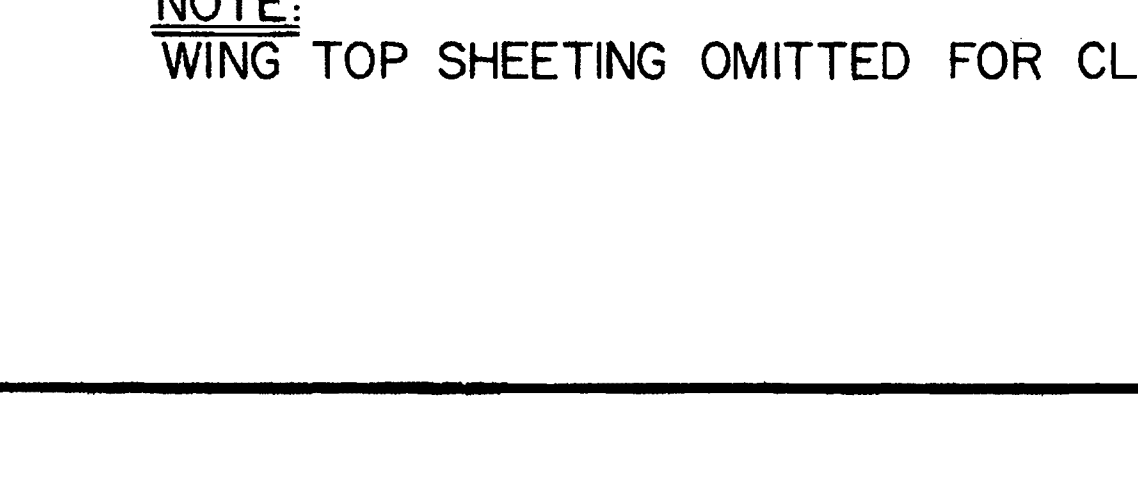
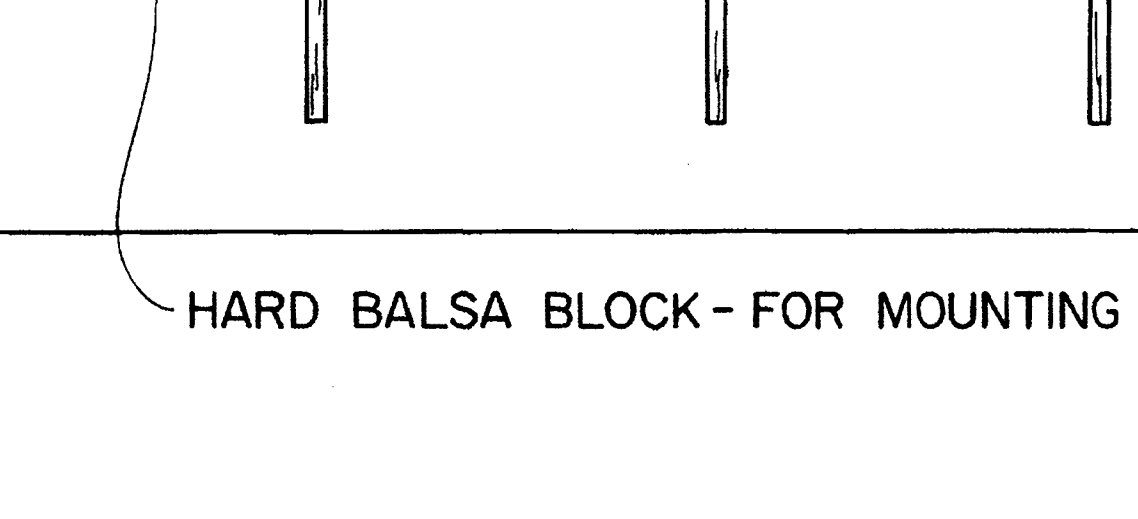
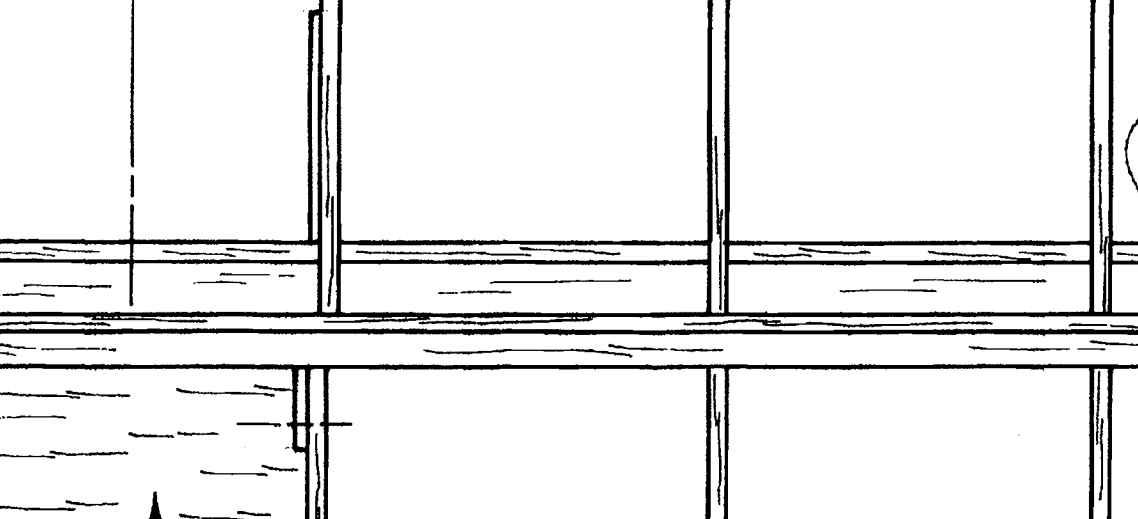
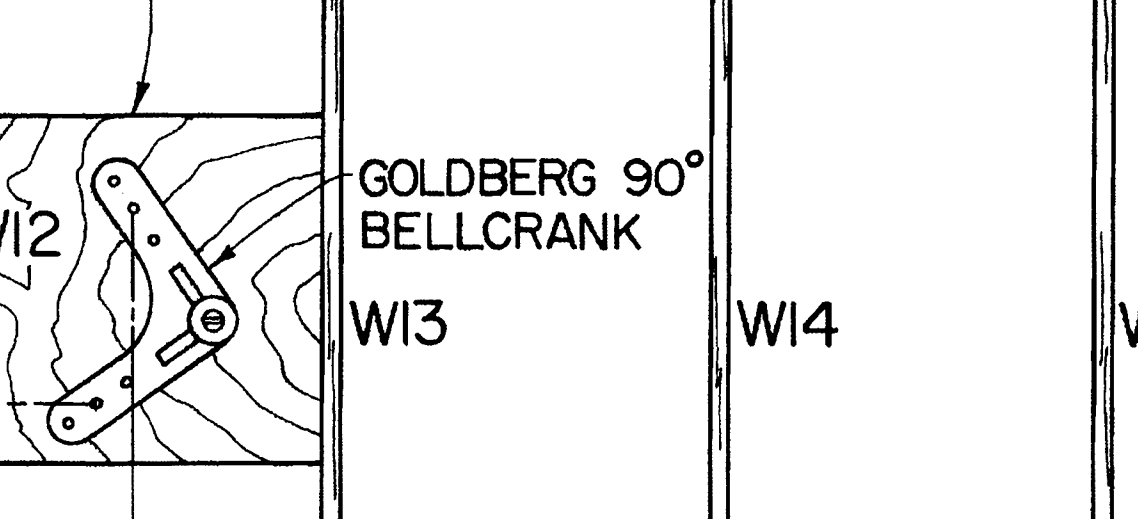
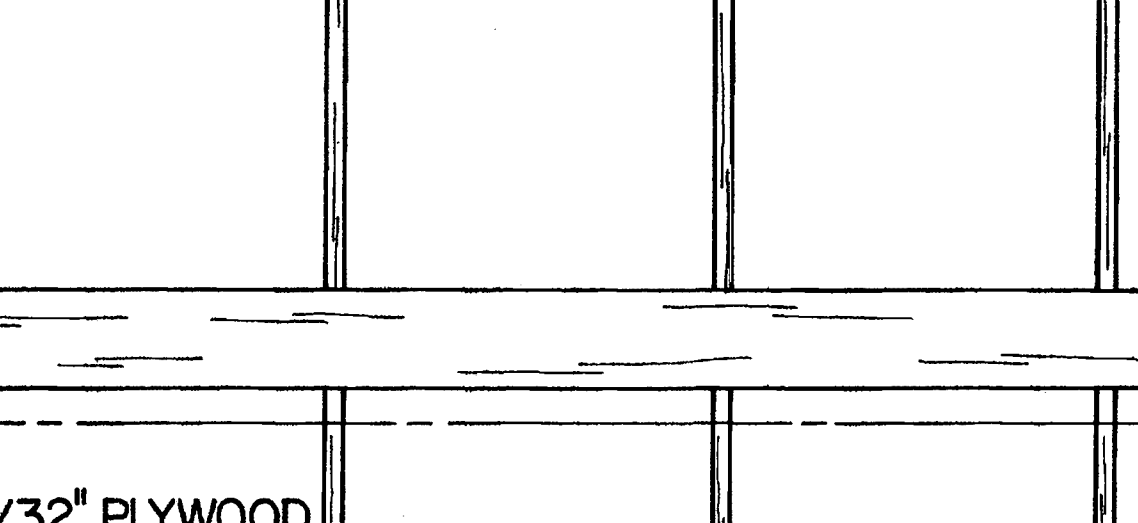
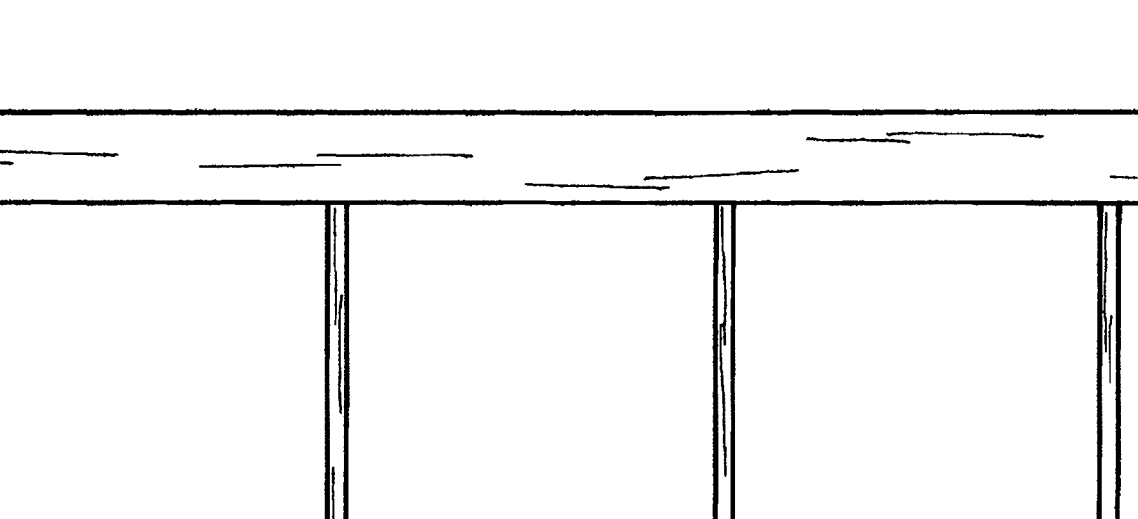
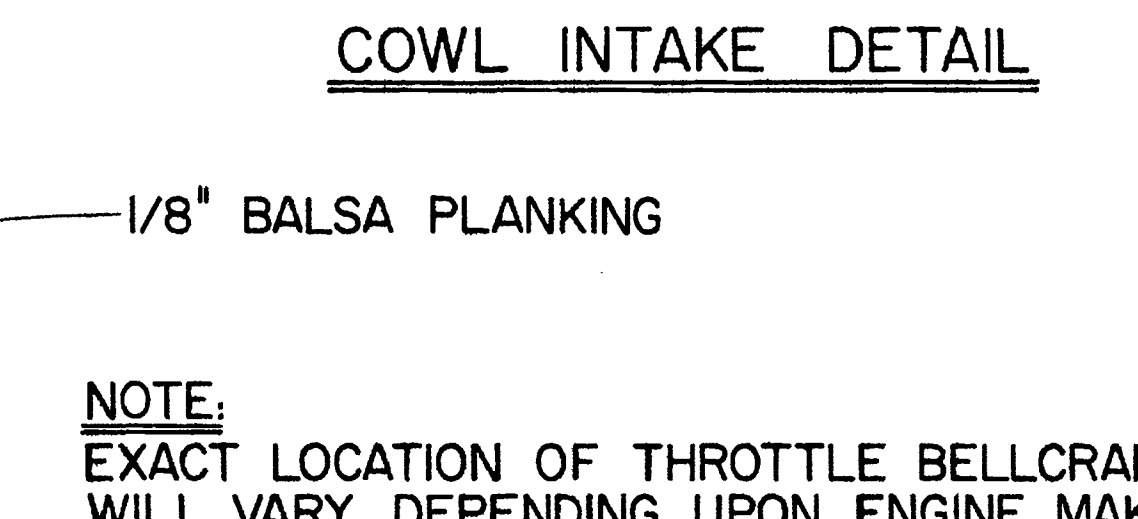
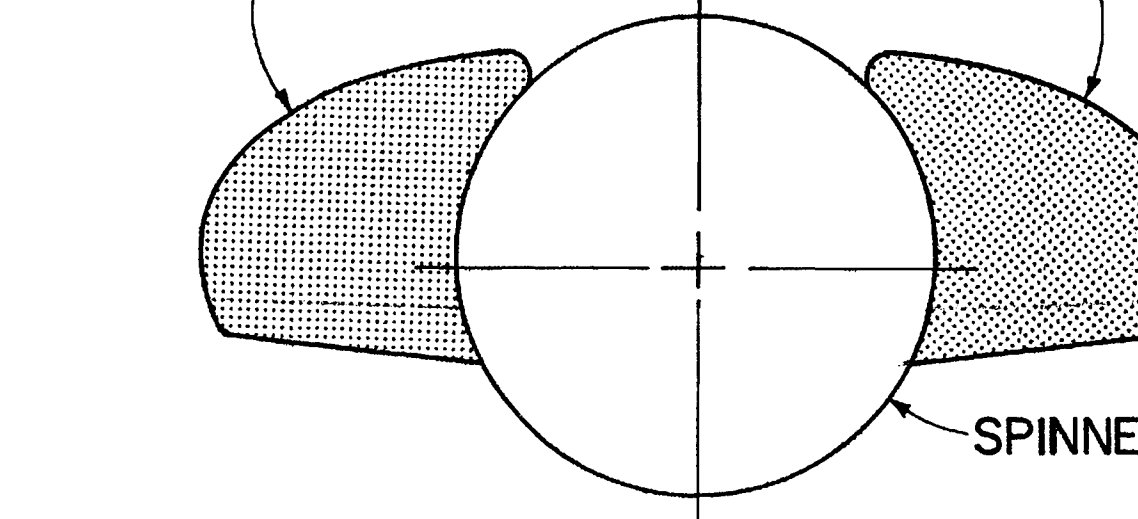
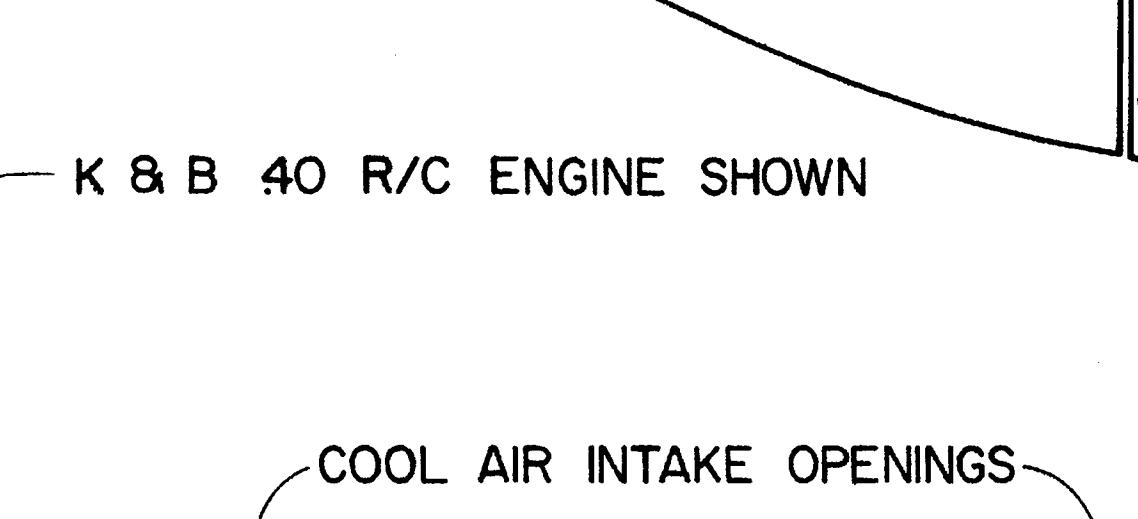
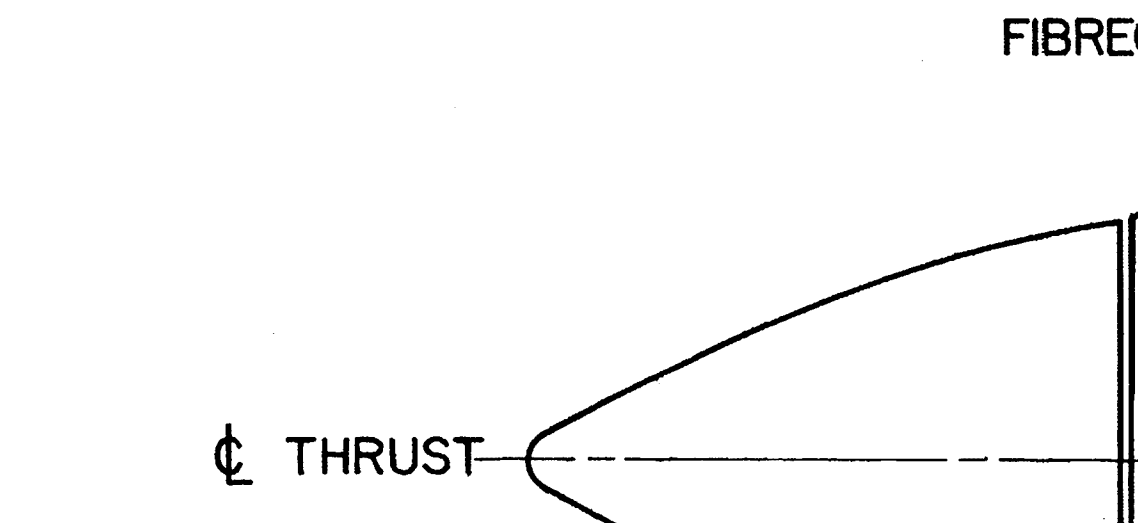
NACELLE CRUTCH POSITION LINES-FOR REFERENCE ONLY, DO NOT CUT OUT.



KRAFT KM-40 ENGINE MOUNT



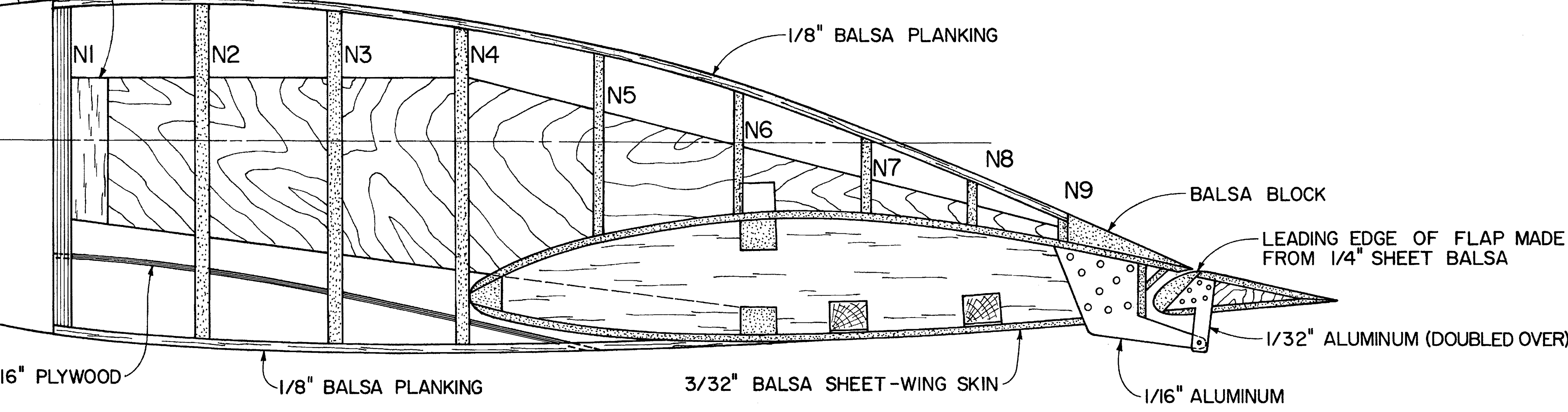
SCALE SPINNER PROFILE-FOR STATIC DISPLAY. FOR FLYING, USE FOX 2 1/2" DIA. "SLIMJIM" SPINNER.



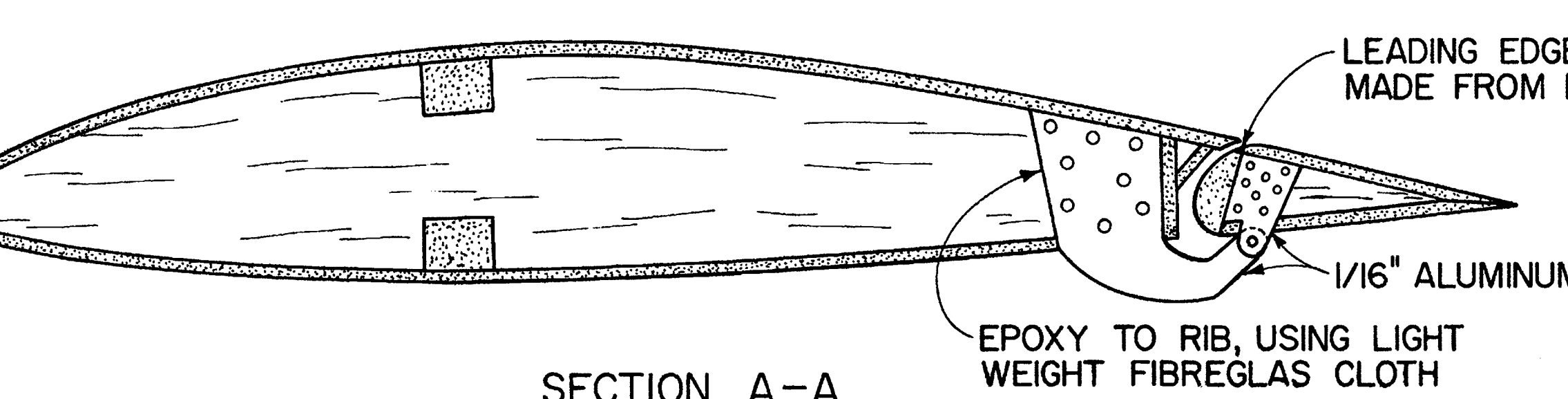
FIBREGLAS COWL OUTLINE

1/2" Balsa TRIANGULAR STOCK

NOTE: NACELLE LEFT SIDE PLANKING OMITTED FOR CLARITY.



ENGINE NACELLE - SIDE VIEW

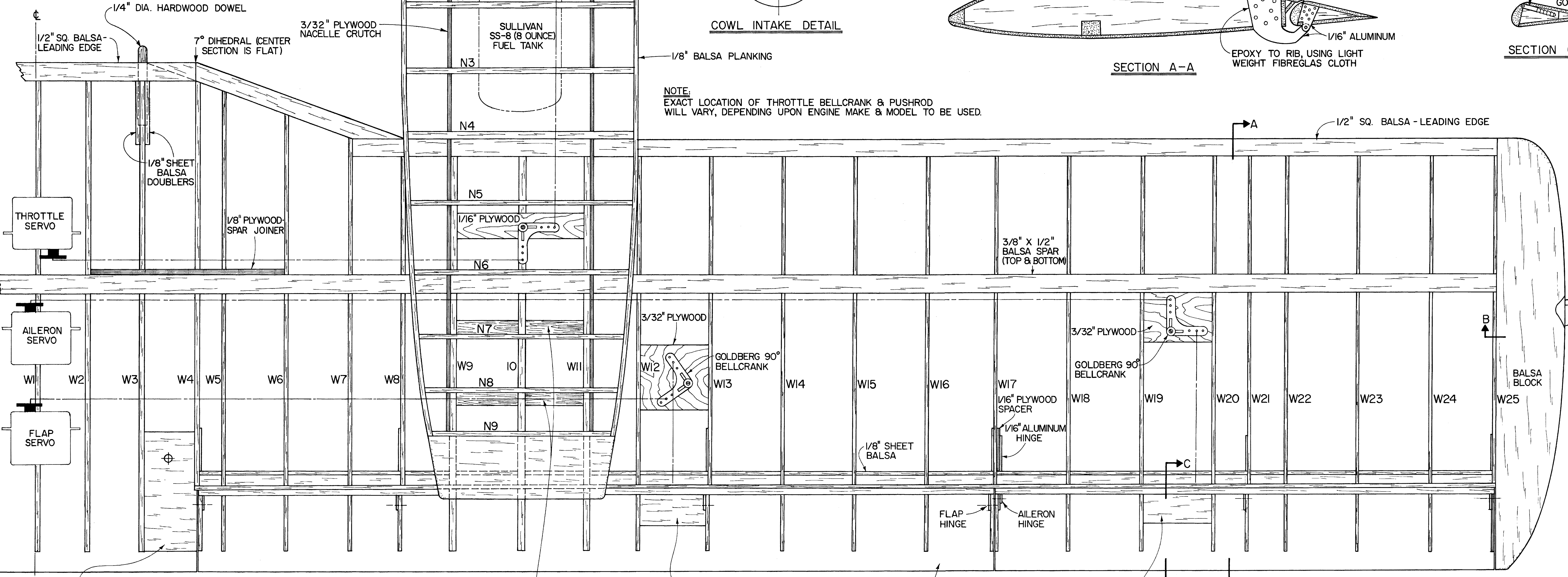


SECTION A-A

TYPICAL INSTALLATION OF ROBERT HORNY HINGE POINT, IMBEDDED IN Balsa BLOCK (USED ON AILERONS & FLAPS AS CONTROL HORN). USE SMALL GOLDBERG SNAP LINK ON PUSHROD.

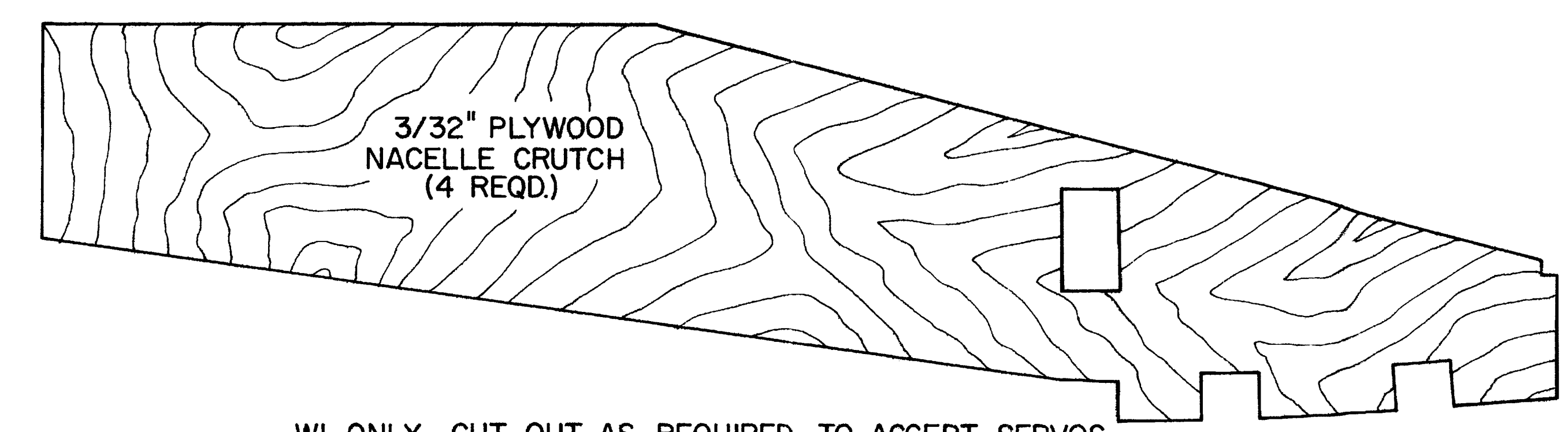
SECTION C-C

NOTE: EXACT LOCATION OF THROTTLE BELLCRANK & PUSHROD WILL VARY, DEPENDING UPON ENGINE MAKE & MODEL TO BE USED.

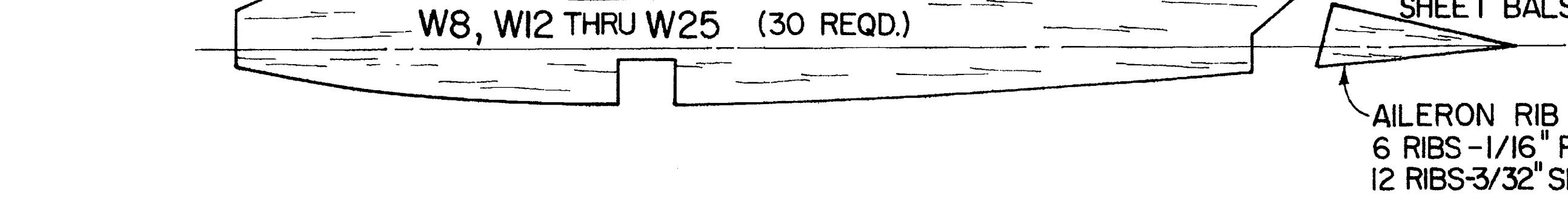
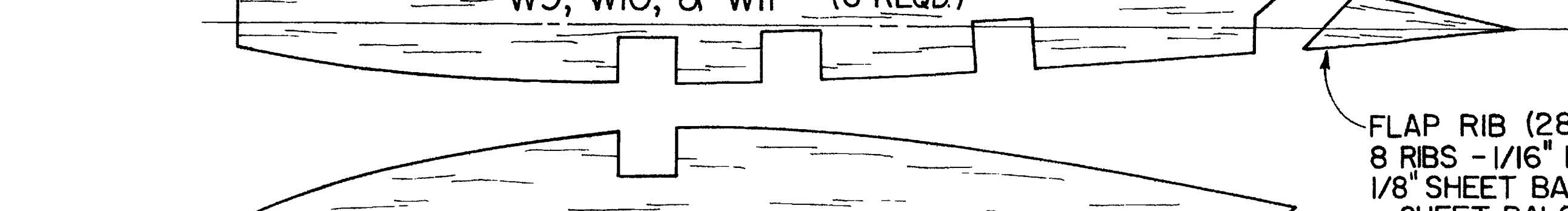
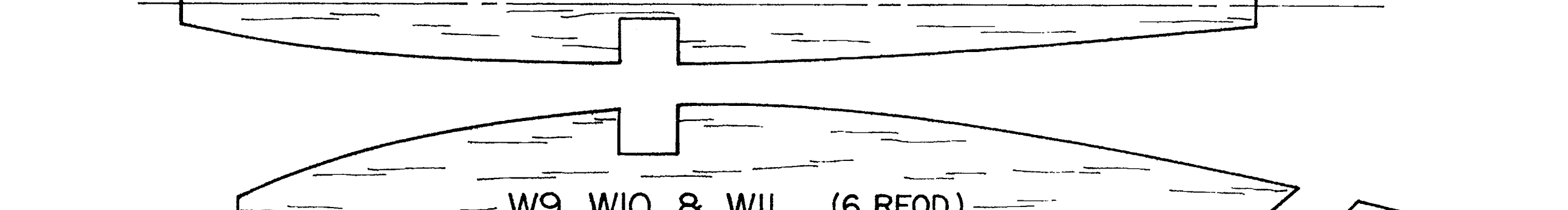
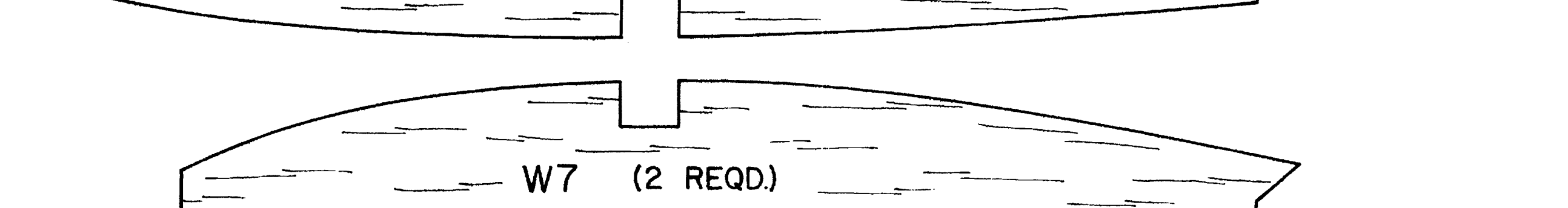
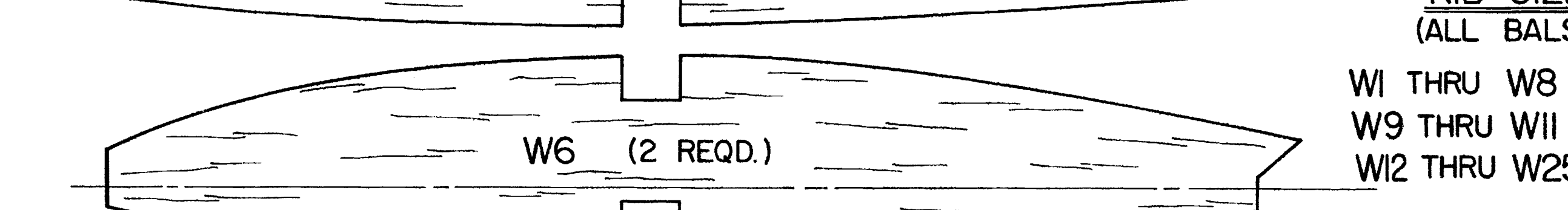
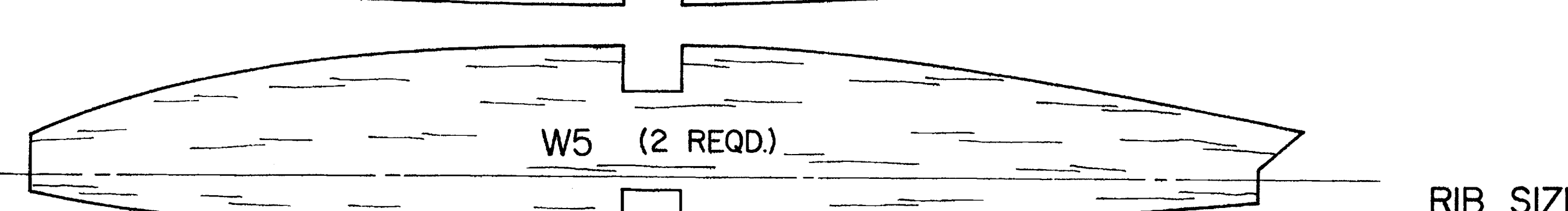


3/8" X 1/2" MAPLE RETRACT LANDING GEAR MOUNTING BLOCKS - SPACING SHOWN IS FOR KRAFT MULTICON RETRACTS

NOTE: WING TOP SHEETING OMITTED FOR CLARITY.



W1 ONLY - CUT OUT AS REQUIRED, TO ACCEPT SERVOS



RIB SIZES (ALL Balsa)
W1 THRU W8 = 1/8"
W9 THRU W11 = 3/16"
W12 THRU W25 = 3/32"

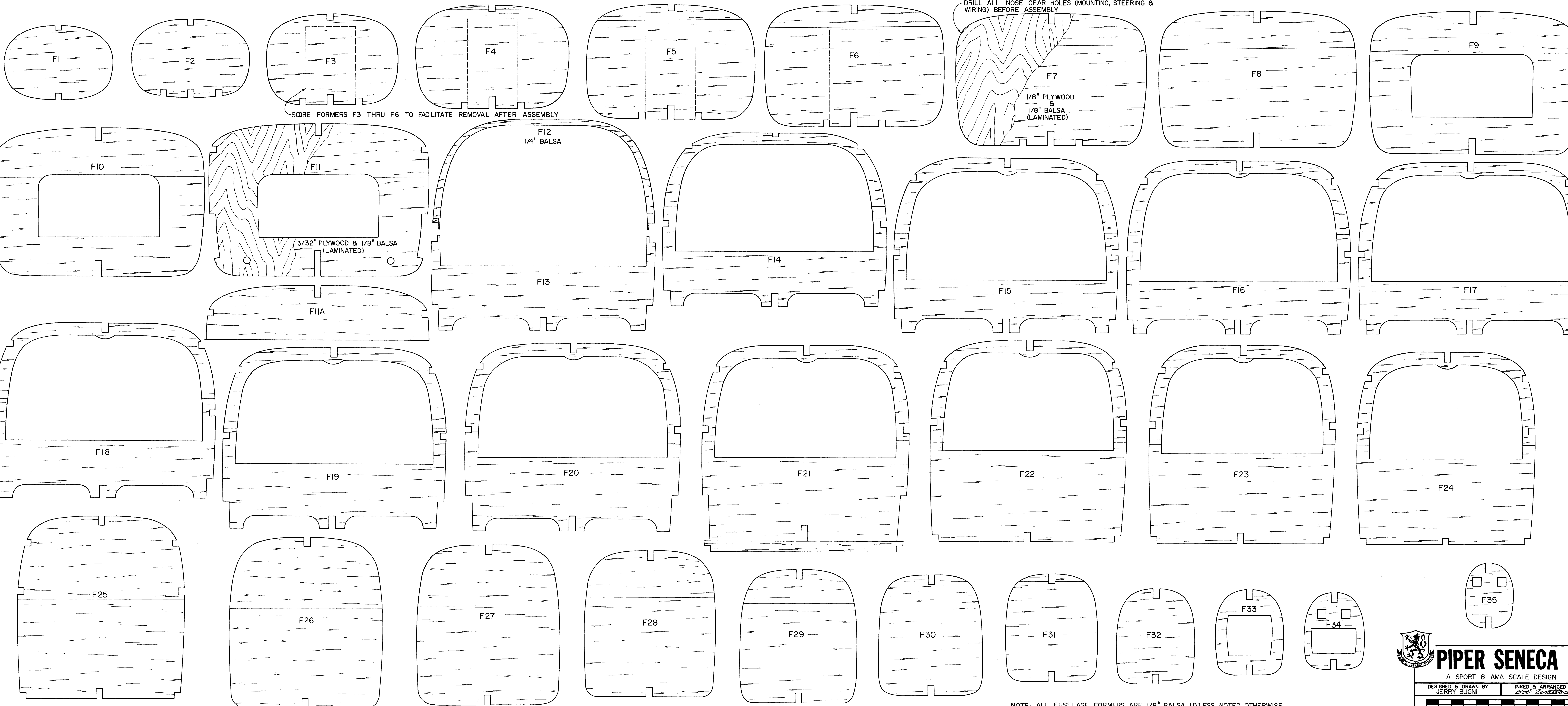
FLAP RIB (28 REQD.)
8 RIBS - 1/16" PLYWOOD, 6 RIBS - 1/8" SHEET Balsa, 6 RIBS - 3/16" SHEET Balsa, & 8 RIBS - 3/32" SHEET Balsa

AILERON RIB (18 REQD.)
6 RIBS - 1/16" PLYWOOD
12 RIBS - 3/32" SHEET Balsa

WING TIP LIGHT

SECTION B-B

PIPER SENECA II
A SPORT & AMA SCALE DESIGN
DESIGNED & DRAWN BY JERRY BUGNI
INKED & ARRANGED BY Bob Walker
SHEET 2 OF 3
PLAN NO. 803



NOTE: ALL FUSELAGE FORMERS ARE 1/8" Balsa, UNLESS NOTED OTHERWISE.

PIPER SENECA II

A SPORT & AMA SCALE DESIGN

DESIGNED & DRAWN BY
JERRY BUGNI

INKED & ARRANGED BY
Bob Wallace

PLAN NO. 803